

VENTRY PARK IMPROVEMENTS

LANDSCAPE PROPOSAL

Following on from our public consultation meeting in September 2019, we are delighted to present a design proposal for Ventry

PARK IMPROVEMENTS

The new design seeks to improve Ventry Park to include the following;

- New creative play areas for children from toddlers to teens, including a multi-purpose kick-about area
- Reduction of hard paved areas for softer landscaping and planting for increased biodiversity
- Provide spaces to sit, enjoy the new planting and meet your neighbours
- Development of a new community garden/growing area
- Creation of new walkways/routes through the park
- Opening up of 2 new gates/entrances for better accessibility to the park

These display boards will be in place until July 31st 2020

We look forward to hearing your comments on the plan which you can submit by the following methods;

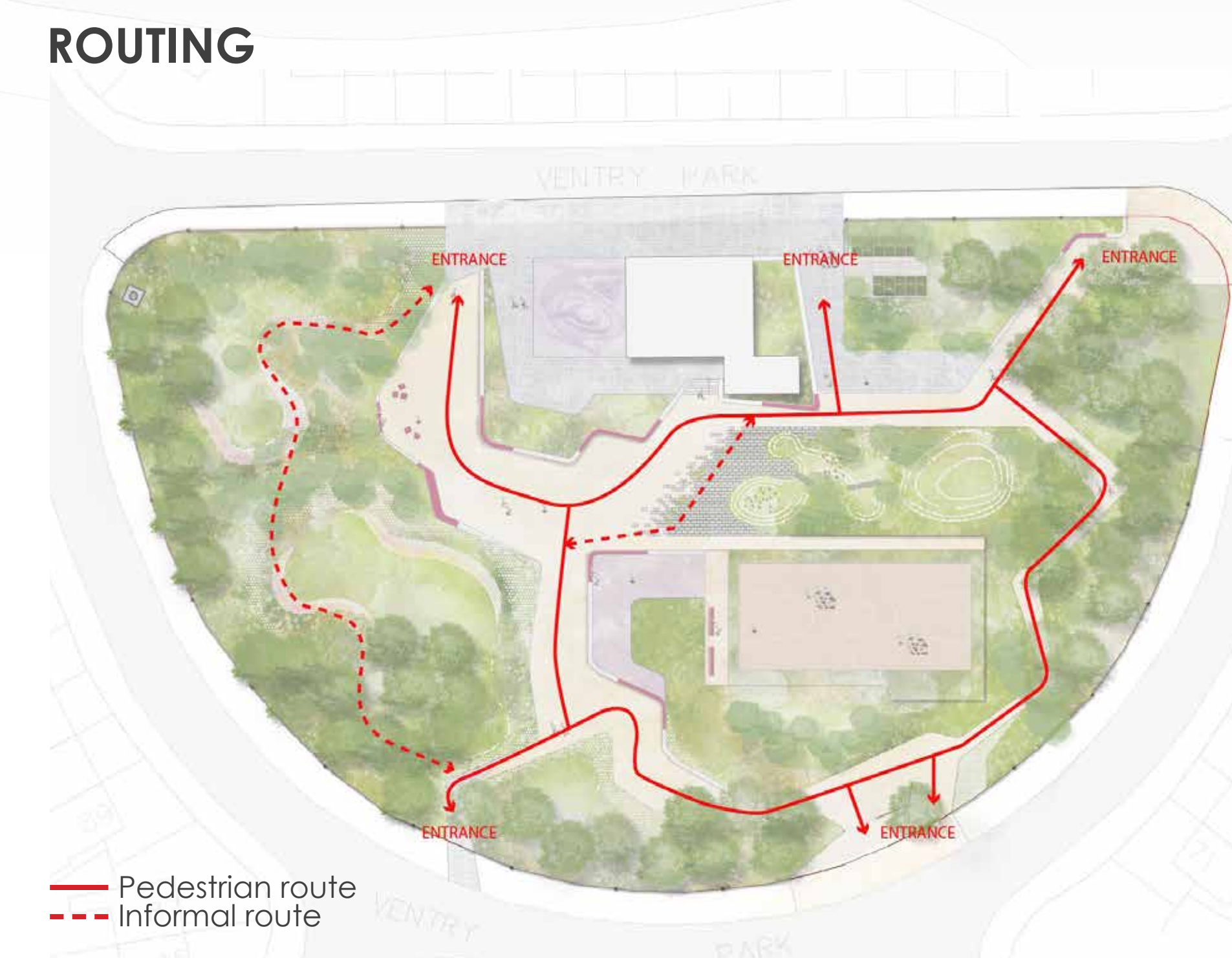
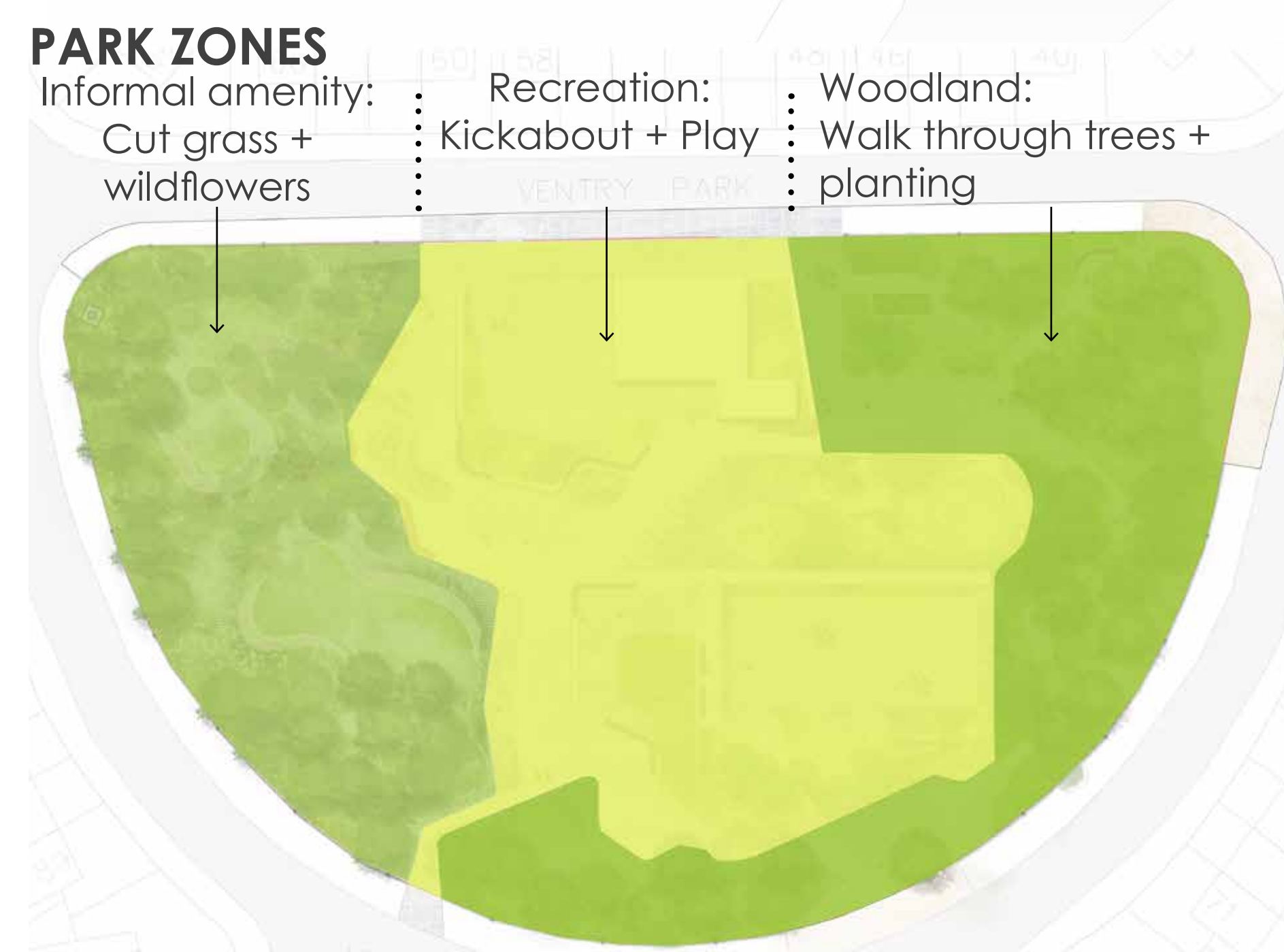
Email: parks@dublincity.ie

Phone: (01) 2225278

Public Consultation Webpage:
<https://consultation.dublincity.ie/parks/ventry-park-improvements>

Post:
Parks and Landscape services,
Block4, Ground Floor,
Wood Quay Civic Offices,
Dublin 8

The closing date for comments is July 31st 2020



VENTRY PARK IMPROVEMENTS

AERIAL VIEW OF VENTRY PARK

- 1 Platform around the building surrounded by a raised planter with herbaceous planting
- 2 Pixelated paving to facilitate for easy connection between the building and play zones
- 3 Informal amenity area with informal pedestrian routes, grass lawn and wildflower planting
- 4 Informal mounded play area for older children
- 5 Sports pitch
- 6 Sand pit play area for small children
- 7 Community allotments
- 8 Entrance gate with maintenance access
- 9 Fenced creche play area
- 10 Seating



VENTRY PARK IMPROVEMENTS

VIEW TOWARDS WOODLAND AREA WITH LUSH PLANTING AND RECREATIONAL AREA WITH PLAY FACILITIES

VIEW TOWARDS WOODLAND
AREA AND RECREATIONAL
AREA



VENTRY PARK IMPROVEMENTS

VIEW OF THE INFORMAL AMENITY AREA WITH WILDFLOWER PLANTING

VIEW TOWARDS INFORMAL AMENITY AREA



VENTRY PARK IMPROVEMENTS

VIEW TOWARDS SMALL CHILDREN PLAY AREA AND INFORMAL AMENITY AREA WITH WILDFLOWER AND HERBACEOUS PLANTING

VIEW TOWARDS SMALL
CHILDREN PLAY AREA

